

*From Analysis to Action:*

# ADVANCING HEALTH EQUITY THROUGH LEARNING HEALTH SYSTEM RESEARCH

---

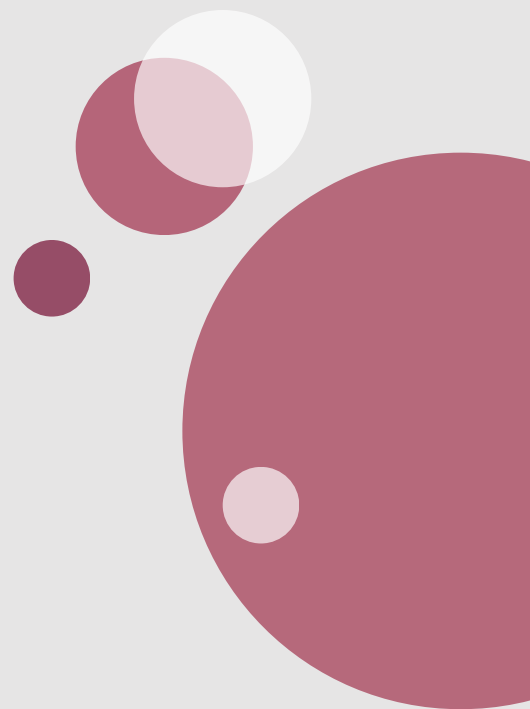
2023 SYMPOSIUM PROGRAM



Nov 9 & 10



NCAA Conference Center



# Welcome!

We are delighted to welcome you to the Health Equity Symposium, hosted by the **Health Equity Advancing through Learning** health systems **Research** (HEAL-R) Collaborative. This event is a testament to our shared commitment to advancing health equity, fostering collaboration, and driving meaningful change within the healthcare landscape.

Over the next few days, we invite you to immerse yourself in enlightening discussions, gain insights from esteemed experts, and forge connections that will propel our collective mission. Together, we can transform health disparities into opportunities for a more equitable world.

Thank you for being part of this vital conversation. Your participation makes a difference, and we look forward to the positive impact we will create together.

Enjoy the symposium!

The HEAL-R Team

## The HEAL-R Collaborative

HEAL-R is a partnership between IU Health's inaugural office of Health Equity Research and Engagement (HERE), IU School of Medicine, the Indiana CTSI, the Regenstrief Institute, and the Irsay Institute at IU Bloomington. The overall mission of HEAL-R is to bring equity research to healthcare delivery. With initial seed money provided by Cook Medical Group, HEAL-R is increasing research capacity in the areas of health disparities and health equity, building on a strong research base at IUSM. Learn more by visiting our website [www.healr.org](http://www.healr.org).



## HEAL-R Leadership Team



**Brownsyne Tucker Edmonds, MD, MPH, MS**  
Associate Dean for Health Equity Research



**Erika R. Cheng, PhD, MPA**  
Executive Director



**Jennifer Buddenbaum, MHA, MS**  
Director of Strategy and Development



**Shelley M. Hoffman, MPH, CCRP**  
Programs Director

# NOVEMBER 9, 2023

<p><b>8:00 AM – 9:00 AM</b></p>	<p><b>Registration &amp; Breakfast</b>   Ballroom</p>
<p><b>9:00 AM – 9:45 AM</b></p>	<p><b>Welcome &amp; Opening Remarks</b>   Ballroom  <b>Dennis Murphy</b>          President &amp; CEO, IU Health</p> <p><b>Brownsyne Tucker Edmonds</b>          Professor of Obstetrics &amp; Gynecology &amp; Associate Dean for Health Equity Research, IUSM          Vice President, Chief Health Equity Officer, &amp; Endowed Chair in Health Equity, IU Health</p>
<p><b>9:45 AM – 10:45 AM</b></p>	<p><b>Morning Plenary: Introduction to the Learning Health System and the Principles of Health Equity Research</b>   Ballroom  <b>Peter J. Embí</b>          Professor &amp; Chair, Department of Biomedical Informatics          Senior Vice President for Research &amp; Innovation &amp; Professor of Medicine, Vanderbilt University Medical Center</p>
<p><b>10:45 AM – 11:00 AM</b></p>	<p><b>Break</b></p>
<p><b>11:00 AM – 12:15 PM</b>  <b>Breakout Sessions</b></p>	<p><b>Session 1A</b>   Jesse Owens  <b>Implementing Outcomes-Oriented Learning Health Systems Research</b>  <i>Featuring talks from HEAL-R's pilot fund awardees</i></p> <p><b>Moderator: Peter J. Embí</b>  <b>Angela Campbell</b> – Assistant Professor of Public Health, IUSM  <b>Paul Dexter</b> – Associate Professor of Clinical Medicine, IUSM &amp; the Regenstrief Institute  <b>April Savoy</b> – Assistant Professor of Computer &amp; Information Technology, Purdue University  <b>Sacha Sharp</b> – Assistant Professor of Medicine, IUSM</p> <hr/> <p><b>Session 1B</b>   Theodore Roosevelt  <b>Practical Approaches to Enhancing Access and Patient Experience through Learning Health Systems Research</b>  <i>Featuring talks from HEAL-R's pilot fund awardees</i></p> <p><b>Moderator: Bernice Pescosolido</b>  <b>Seethal Jacob</b> – Assistant Professor of Pediatrics, IUSM  <b>Hank Green</b> – Associate Professor of Public Health, IUB  <b>Francesca Williamson</b> – Assistant Professor of Learning Health Sciences, University of Michigan  <b>Rebecca McNally Keehn</b> – Assistant Professor of Clinical Pediatrics, IUSM</p> <hr/> <p><b>Session 1C</b>   Auditorium  <b>Elevating Equity: IUSM's Initiatives in Research, Education, and Beyond</b></p> <p><b>Moderator: Annie Cheek</b>  <b>Rohan Dharmakumar &amp; Onyedika Ilonze</b> – IUSM Cardiovascular Institute  <b>Bryan Schneider &amp; Katherine Ridley-Merriweather</b> – IU Simon Comprehensive Cancer Center  <b>Sophia Wang</b> – Indiana Alzheimer's Disease Research Center  <b>Syik Sotto</b> – IUSM Department of Medicine</p>

# NOVEMBER 9, 2023

<b>12:15 PM – 1:30 PM</b>	<b>Lunch</b>   Ballroom
<b>1:30 PM – 2:30 PM</b>	<b>Keynote: Transforming Science to Achieve Health Equity</b>   Ballroom <b>Consuelo H. Wilkins</b> Senior Vice President & Senior Associate Dean for Health Equity & Inclusive Excellence, Vanderbilt University Medical Center
<b>2:30 PM – 2:45 PM</b>	<b>Break</b>
<b>2:45 PM – 4:00 PM</b>	<b>Session 2</b>   Ballroom <b>Building Community Engagement &amp; Partnerships in Research to Address Health Equity</b> <b>Moderator: Sarah Wiehe</b> <b>Calvin Sanders</b> - Program Manager, iHeart Collaborative <b>Tracey Wilkinson</b> - Principle Investigator, Path4YOU <b>Lisa Staten</b> - Principle Investigator, Diabetes Impact Project (DIP-IN) <b>Jasmine Gonzalvo</b> - Director, Center for Health Equity & Innovation (CHEI) <b>Sylik Sotto</b> - Director, All IN for Health
<b>4:00 PM – 4:15 PM</b>	<b>Day 1 Closing Remarks</b>   Ballroom <b>Erika Cheng</b> Associate Professor of Pediatrics HEAL-R Executive Director
<b>4:15 PM – 5:30 PM</b>	<b>Networking Reception &amp; Poster Hall</b>   Palmer Pierce



## CALLING ALL HEALTH EQUITY SCHOLARS!

HEAL-R is building a database exclusively for health equity scholars at IU. This clearinghouse aims to assist you in discovering grant opportunities, networking with fellow scholars, and accessing essential resources for your health equity research. Please scan the QR code and fill out the survey to be included. No further action is needed, as we will utilize this information to build your online profile.  
Thank you for your participation!



# NOVEMBER 10, 2023

<b>7:30 AM – 8:15 AM</b>	<b>Registration &amp; Breakfast</b>   Ballroom
<b>8:15 AM – 8:30 AM</b>	<b>Welcome</b>   Ballroom <b>Tatiana Foroud</b> Executive Associate Dean for Research Affairs, IUSM
<b>8:30 AM – 9:30 AM</b>	<b>Morning Plenary: Understanding and Identifying the Effects on Health Equity of Social Determinants of Health</b>   Ballroom <b>Monica Peek</b> Ellen H. Block Professor for Health Justice, Department of Medicine Associate Director, Chicago Center for Diabetes Translational Research, The University of Chicago Medicine
<b>9:30 AM – 9:45AM</b>	<b>Break</b>
<b>9:45 AM – 11:00 AM</b> <b>Breakout Sessions</b>	<b>Session 3A</b>   Palmer Pierce <b>Using Data to Drive Healthcare Improvement and Impact</b> <b>Moderator: Titus Schleyer</b> <b>Randy Grout</b> - Director, Clinical Informatics & Learning Health Systems, Eskenazi Health <b>Rachel Patzer</b> - President & CEO, Regenstrief Institute <b>Joshua Vest</b> - Professor & Vice Chair, Fairbanks School of Public Health <b>Nir Menachemi</b> - Executive Associate Dean & COO, Fairbanks School of Public Health <b>Karen Frederickson Comer</b> - Associate Director, The Polis Center
	<b>Session 3B</b>   Theodore Roosevelt <b>Navigating Ethical Challenges for Embedded Research in Learning Health Systems</b> <b>Moderator: Peter Schwartz</b> <b>Amy Knopf</b> - Associate Professor of Nursing, IUSN <b>Jane Hartstock</b> - System Director of Clinical & Organizational Ethics, IU Health <b>Shaun Grannis</b> - Vice President of Data & Analytics, Regenstrief Institute <b>David Wilkes</b> - National Director, Robert Wood Johnson Foundation
<b>11:00 AM – 11:15 AM</b>	<b>Break</b>   Atrium

**We care about what you think.** →

Answer this quick survey to provide important feedback about the symposium.



**The HEAL-R Collaborative**

# NOVEMBER 10, 2023

<b>11:15 AM – 12:30 PM</b> <b>Breakout Sessions</b> <b>Featuring Select</b> <b>Abstracts</b>	<b>Session 4A   Theodore Roosevelt</b> <b>Building Bridges: Effective Community Engagement in Health Research</b>  <b>Moderator: Michelle Miller</b> <b>Ann Marie Martin</b> – Postdoctoral Fellow, IUSM <b>Brendan Jones</b> – MS2, IUSM <b>Brianna Chandler</b> – MS2, IUSM <b>Bridget Hawryluk</b> – Human-Centered Design Researcher, IN CTSI <b>Holly Wood</b> – Senior Director of Health Equity Initiatives, Purdue University <b>Sylvia Saxena</b> – Senior Health Equity Analyst, Purdue University <b>Sylk Sotto</b> – Director, All IN for Health, IN CTSI
	<b>Session 4B   Palmer Pierce</b> <b>Advancing Health Equity through Data-Driven Research</b>  <b>Moderator: Matt Aalsma</b> <b>Areeba Kara</b> – Associate Professor of Clinical Medicine, IUSM <b>Natalie Guerrero</b> – Fellow, Adolescent Medicine, IUSM <b>India Johnson</b> – Associate Professor of Psychology, IUPUI <b>Min Lee</b> – PhD Student, Purdue University <b>Veronica Derricks</b> – Assistant Professor of Psychology, IUPUI <b>Kaitlyn Reif</b> – MS2, IUSM
	<b>Session 4C   Auditorium</b> <b>Empowering Learners to Drive Change: Health Equity in Education</b>  <b>Moderator: Johanne Eliacin</b> <b>Sacha Sharp</b> – Assistant Professor of Medicine, IUSM <b>Stephanie Cortes</b> – Medical Resident, IUSM <b>Joe Kotva</b> – Assistant Professor of Clinical Medicine, IUSM <b>Korey Jackson</b> – Senior Health Equity Analyst, Purdue University <b>Rachel Santos</b> – Director of Education Policy, Indiana Latino Institute <b>Maya Cloyd</b> – Medical Resident, IUSM <b>Julia LaMotte</b> – Assistant Professor of Clinical Pediatrics, IUSM
<b>12:30 PM – 12:45 PM</b>	<b>Break for Lunch   Atrium</b> Pick up a boxed lunch in the Atrium and join us in the Ballroom for Session 5.
<b>12:45 PM – 2:00 PM</b>	<b>Lunch &amp; Session 5   Ballroom</b> <b>Collaboration Over Competition: The Power of Community Engagement &amp; Accountability to Advance Health Equity</b> <i>Featuring members of the Central Indiana Alliance for Health Equity</i>  <b>Moderator: Robert Shegog</b> – President & CEO, Indianapolis Recorder Media Group <b>Brownsyne Tucker Edmonds</b> – VP & Chief Health Equity Officer, IU Health <b>Mary Alice Trent</b> – Director of DEI Education & Learning, Community Health <b>Angela Smith Jones</b> – VP of Diversity & Inclusion, Health & Hospital Corporation of Marion County <b>Mercy Obeime</b> – Physician, Franciscan Health <b>Chrystal Ratcliffe</b> – President, Greater Indianapolis NAACP
<b>2:00 PM – 2:15 PM</b>	<b>Closing Remarks &amp; Adjourn</b>

# Our Speakers



## ***Dennis M. Murphy***

Dennis Murphy is president and CEO of IU Health, the largest integrated healthcare system in Indiana and one of the largest in the country. He joined IU Health in 2013 as chief operating officer and has guided IU Health as it seeks to fulfill its vision of making Indiana one of the healthiest states in the country. This goal will ideally be achieved through the provision of high-quality destination health programs, building value-based care constructs with payors and employers, and addressing underlying impediments to health through community health programs. This vision will be driven by a collective culture that fosters purpose, excellence, compassion, and teamwork. Dennis has spent his career at academic health centers, with previous leadership positions at Northwestern Medicine, University of Chicago Medicine, and Johns Hopkins Hospital. A Chicago native, Dennis holds a BA from University of Notre Dame and MHA from Duke University. He is active in his community and with other healthcare organizations including board memberships with the Indiana Chamber of Commerce, Indiana Hospital Association, and The Association of American Medical Colleges (AAMC).

## ***Brownsyne Tucker Edmonds, MD, MPH, MS***

Brownsyne Tucker Edmonds is the inaugural Vice President and Chief Health Equity Officer for Indiana University Health and the Associate Dean for Health Equity Research for Indiana University School of Medicine (IUSM), where she holds an endowed chair for Health Equity Research. She is also a Professor of Obstetrics and Gynecology and Clinical Pediatrics at IUSM, with training in general OBGYN, health services research, public health, and clinical ethics. Her extensive research portfolio focuses on health equity and shared decision-making in reproductive health care. Dr. Tucker Edmonds previously served as an Assistant Dean for Diversity Affairs at IUSM, and co-directed Workforce Development for the Indiana CTSI. She currently serves on ACOG's Committee on Advancing Equity in Obstetric & Gynecologic Health Care and is Immediate Past Chair of the Indiana Section. She is an ELUM of the Executive Leadership in Academic Medicine (ELAM) Program. In 2021, Dr. Tucker Edmonds was elected as a National Academy of Medicine Emerging Leader in Health and Medicine.



## ***Peter J. Embí, MD, MS, FACP, FACMI, FAMIA, FIAHSI***

Dr. Peter Embí is Professor and Chair of the Department of Biomedical Informatics, Professor of Medicine, and Senior Vice President for Research and Innovation at Vanderbilt University Medical Center (VUMC). Before his tenure at VUMC, Dr. Embí held various leadership roles, including President and CEO of the Regenstrief Institute at the Indiana University School of Medicine. Dr. Embí's extensive experience includes co-founding health IT startups, collaborating with companies to develop healthcare innovations, and creating programs to support faculty in translating discoveries into practice. In recognition of his contributions, Dr. Embí has been elected to Fellowship in the American College of Physicians, the American College of Medical Informatics, the American Medical Informatics Association and the International Academy of Health Sciences Informatics. He has also served in numerous national leadership roles, including as the immediate past president and chair of the Board of Directors of the American Medical Informatics Association, as a member of the Board of Scientific Counselors to the National Library of Medicine and on the National Advisory Council for the Agency for Healthcare Research and Quality.

# Our Speakers



## **Consuelo H. Wilkins, MD, MSC**

Dr. Consuelo H. Wilkins is a nationally recognized leader in health equity research and a Professor of Medicine in the Division of Geriatric Medicine at Vanderbilt University Medical Center (VUMC). She also holds the role of Senior Vice President and Senior Associate Dean for Health Equity and Inclusive Excellence at VUMC. Dr. Wilkins is distinguished for her pioneering work in engaging racial and ethnic minority communities, incorporating implementation science methodologies into clinical research design, and promoting participant and community engagement in biomedical discovery. As an elected member of the National Academy of Medicine, she has authored over 100 research papers and led multiple large NIH research center awards. Dr. Wilkins currently oversees the Engagement Core of the All of Us Research Program, which involves research participants in program governance, oversight, and dissemination. Prior to her tenure at VUMC, she held positions at Washington University School of Medicine in St. Louis, where she directed initiatives focused on community health, community-engaged research, and addressing health disparities.

## **Tatiana Foroud, PhD**

Dr. Tatiana Foroud is the Executive Associate Dean for Research Affairs, Indiana University Health's Executive Vice President of Academic Affairs for Clinical Research, the August M. Watanabe Professor for Medical Research, and the Joe C. Christian Professor and Chair of the Department of Medical and Molecular Genetics at Indiana University School of Medicine. Dr. Foroud is also a Distinguished Professor and a Chancellor's Professor at Indiana University-Purdue University Indianapolis.

Over the course of her more than 25 years with IUSM, Dr. Foroud has been actively involved in the genetics of neurodegenerative disorders such as Alzheimer's disease and Parkinson's disease, as well as studies of alcoholism and fetal alcohol spectrum disorders. A statistical geneticist by training, she leads several large National Institutes of Health-funded biorepositories focused on the development of effective biomarkers of disease onset and progression.



## **Monica Peek, MD, MPH**

Dr. Monica Peek is a Professor of Medicine at the University of Chicago, where she works as a clinician, ethicist, and health services researcher. Dr. Peek is the Associate Director and the Director of Research at the MacLean Center for Clinical Medical Ethics, the Associate Director of the Chicago Center for Diabetes Translation Research, and the Executive Medical Director of Community Health Innovation. Her research pursues health equity and social justice, with a focus on promoting shared decision-making among marginalized patient populations, integrating the medical and social needs of patients, and addressing healthcare discrimination and structural racism that impact health outcomes.

Dr. Peek is a Senior Associate Editor for the journal *Health Services Research*, a member of the Executive Council for the American Diabetes Association (ADA), and a member of the national Advisory Board for Physicians for Human Rights. She is a previous member of the National Advisory Council for the Agency for Healthcare Research & Quality (AHRQ) and the National Council for the Society of General Internal Medicine (SGIM). She was named one of the "Top 40 under 40" in Chicago and has been ranked among Chicago's Top Physicians. She has been featured in NPR, PRI/The World, CNN, and TIME Magazine.



# Our Moderators



**Peter J. Embí, MD, MS**  
Senior VP, Vanderbilt University Medical Center



**Bernice A. Pescosolido, PhD, MPhil, MA**  
Director, Irsay Institute



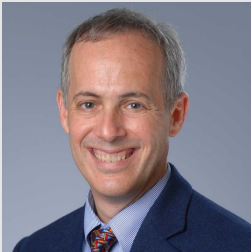
**Annie Cheek, FACHE, MBA, MS**  
Executive Director, IUSM Cardiovascular Institute



**Sarah E. Wiehe, MD, MPH**  
Co-Director, Indiana CTSI



**Titus K. Schleyer, DMD, PhD**  
Director, Learning Health Informatics Program, Regenstrief Institute



**Peter H. Schwartz, MD, PhD**  
Director, IU Center for Bioethics



**Michelle L. Miller, PhD, MA**  
Assistant Professor, IUSM



**Matt C. Aalsma, PhD, MA, HSPP**  
Director, IUSM Adolescent Health Research Program



**Johanne Eliacin, PhD, HSPP**  
Core Investigator, VA HSR&D Center for Health Information & Communication



**Robert Shegog**  
President & Chief Executive Officer, Recorder Media Group

# Continuing Education Credits



**Scan to receive CME Credit!**

This activity has been approved for AMA PRA Category 1 Credit(s)<sup>™</sup> contact hours by the IUSM. To receive CME credit hours for the Health Equity Symposium programming, which includes attendance of abstract and scientific sessions, registered attendees must submit an electronic CME Evaluation by no later than 11:45 PM on November 24, 2023. Credit will be awarded within 30-60 days following the activity.

For questions or concerns, contact IUSM Division of Continuing Medical Education.



# Poster Presentations

Poster #	Title and Authors	Poster #	Title and Authors
<b>CLINICAL INNOVATION</b>			
1	<b>Piloting a Relational Social Determinant of Health (SDOH) Scale to include Empowerments and Determinants</b> Guffey, N., Ciccarella, M., Ford, S.	9	<b>Increasing Access to Early Prenatal Care in the Medically Underserved through Promoting Partnership between the IU Student Outreach Clinic and Local Community Organizations</b> Wendel, K., Wesner, S., Chimhanda, M.
2	<b>Outer and inner contexts in developmental disability treatment: Impacts of a coordinated care continuum sensitive to readiness and bridging factors in developmental disability outcomes</b> Neal, T., Swiezy, N.	10	<b>Optimizing Clinical Environments for Patients with Obesity: A Checklist</b> Boland, W., Li, W.S., Dilly, C.K.
3	<b>Equity-Focused Substance Screening for Birth Parents and Infants in the Riley Maternity Tower</b> Clements, P., Rouse, C., Johnson J., Lien, I.	11	<b>Overcoming Barriers Faced by Minoritized Populations in Receiving Hypertension Treatment</b> Stopa, M.M., Remy, A., Hoffman, S., Cheng, E.R., Tucker Edmonds, B.
4	<b>Sharing Education on Equity and Diversity (SEED) - An MOC Part 4 Project</b> Clements, P., Rose, B.	13	<b>The Mental Toll of Delaying Gender Affirming Surgeries and Need for More Gender Affirming Surgeons</b> Holoan, M.M., Szilagyi, H.A., O'Connor, M.C., Adindu, U., Haas, A., Hadad, I.
5	<b>Empowering Women's Health: Assessing Breast Cancer Screening as a Bridge for Lung Cancer Screening</b> Ajrouch, A., Khalifeh, Y., Beirat, A., Alhaffar, D., Karkash, A., Aljaras, R., Hanna, N.	14	<b>Retrospective Analysis of COVID-19 Impact on Social + Emotional Development in Children of Low-Income Communities from Head Start</b> Li, G.S., Sanapati, S.
6	<b>Increased Accessibility and Quality of Language Services in Pediatric Inpatient Settings</b> Head, K., Casavan, K., Engelmann, J., Fahey, M., Gregg, V., Méndez, R., Jackson, M.D.	15	<b>In-Theatre Simulation as a Tool for Gynecologic MIS Training in Eldoret, Kenya</b> Roop, L., Iliwa, S., Yang, J., Wu, W.J.
7	<b>Quantitative Variation in the Understanding of ASD within School Personal between the U.S. &amp; Singapore</b> Nazarloo, S., Neal, T., Swiezy, N., Deodhar, A.	16	<b>The Role of Sociogenomics on Chronic Wounds</b> Hajj, J., Singh, K., Sen, C.K.
8	<b>Culturally adapted or validated non-pharmacological interventions for Hispanic patients recovering from a brain injury and their caregivers: A systematic literature review</b> Garcia, P., Neumann, D., Parrott, D., Krch, D., Lequerica, A., Morel, G., Polsinelli, A., Ralston, R.	21	<b>Pituitary Adenoma and Social Determinants of Health: A Scoping Review</b> Virtanen, P.S., Obeng-Gyasi, B., Brown, E.D.L., Tinkham, S.A., Vetter, C.J., Richardson, A.M.
		22	<b>Social Determinants of Health in Pineal Cyst Surveillance</b> Virtanen, P.S., Foster, K.A., Obeng-Gyasi, B., Huh, A., Patel, A., Richardson, A.M.
<b>COMMUNITY &amp; STAKEHOLDER ENGAGEMENT</b>			
12	<b>Relationship between Pantry Characteristics and Clientele Transportation when Accessing Food Resources in St. Joseph County and Surrounding Areas</b> Stone, J., Bales, J., Harris, J., Lassen, D.	23	<b>Increasing Black Women's Motivations to Participate in Breast Cancer Clinical Trials: Formative Research Exploring the Legacy Norm</b> Reif, K., Ridley-Merriweather, K.
17	<b>Knowledge, attitudes, and perceptions of pharmacogenomics among low-income residents of central Indiana</b> Cooper, J., Murthy, V., Messmore, N.	24	<b>The Black PEARL Project: Bridging the Gap in Black Lactation</b> Klitzman, M.D., Davis, T.
18	<b>Social Determinants of Health Associated with Inpatient Admissions for Congestive Heart Failure, Diabetes, Chronic Obstructive Pulmonary Disease, and Asthma</b> Deckbar, J.Q., DeMichael, K., Gad, W., Muvuka, B., Guerrero, J.	25	<b>Social Determinants of Health and 30-Day Readmissions in an Urban Community Hospital in Northwest Indiana</b> Gonsiorowski, E., Yallourakis, M., Guerrero, J., Muvuka, B.
19	<b>A National Survey of Spirometry Interpretation Practices</b> Hachey, K., Duncan, F., Smith, J.P.	26	<b>Cultivating a Commitment to Health Equity through Program for Teaching Physical Exam Skills</b> Fox, M.D., Harmon, J.P.
20	<b>The Indy Fathers Health Study: Engaging Young Dads in the Discussion of Family Health</b> Funches L., Vaughn, S., Smith, M., Fann, J.		
<b>SPECIAL TOPICS</b>			
27	<b>My story your story: The shared experiences of provider and patient in community-engaged services</b> Neal, T.	30	<b>The Undiagnosed Rare Disease Clinic Program of Indiana University: lessons learned from the first 100 patients enrolled (Phase-I pilot)</b> Liaqat, K., Treat, K., Mantcheva, L., Conboy, E., Vetrini, F.
28	<b>Barred from Equitable Care</b> Rahim, M.Q., Rahrig, A.L., Saraf, S.J.	31	<b>A New Area for Biomedical Research: Equity in Graduate Medical Education</b> Rezk, Y.
29	<b>Medically Indicated Abortion in Stage 3 CKD</b> Pauly, A., Kovalan, M.K., Richardson, M., Cordell, L.A., Miller, B., Rouse, C., Bernard, C.		

# Poster Presentations

Poster #	Title and Authors	Poster #	Title and Authors
<b>RESEARCH &amp; EVALUATION</b>			
32	<b>Discrimination in Hospital Medicine: Results from a Qualitative Study</b> Kara A., Wright, C., Zee-Cheng, J., Huffman, M., Cottingham, A.	46	<b>Unlocking Potential: Empowering Diverse, Creative Minds from Community Colleges to Pursue Medicine</b> Blais, A., Boyer, T.
33	<b>Health Disparity In Pre-emptive Transplant And Dialysis Vintage Based On Social Vulnerability Index</b> Adebiyi, O., Yenebere, P., Asif, S., Muhammad, J., Mishler, D., Li, Y., Lane, K., Yaqub, S.	47	<b>Racial Disparities in a Community-based Addiction Reduction (CARE) Program for Women of Reproductive Age with Substance Use Disorder</b> Yakovlyeva, A., Griffin, W., Worden, A., Roth, S., DeChant, P., Butler, D., Tang, Q., Litzelman, D.K.
34	<b>Concordance Of Social vulnerability Index with Clinical Outcomes In Kidney Transplant Recipients</b> Adebiyi, O., Yenebere, P., Asif, S., Muhammad, J., Mishler, D., Li, Y., Lane, K., Yaqub, S.	48	<b>Analysis of Lung Cancer Disparities in Northwest Indiana</b> Colston, K., Ndama, M., Han, A.
35	<b>Addressing disparities in skin cancer through a primary care-focused educational intervention</b> Watters, J., Keena Que, S., Bell, M.	49	<b>Exploring Autism Knowledge and Provider Experience: Implications for Diagnosis, Treatment, and Training Needs</b> Somasundaram, M., Neal, T., Uppalapati, Y., Gottipati, M., Swiezy, N., Gandhi, S.N.
36	<b>Comparison of Transfer Patterns by Emergency Medical Services in Trauma Patients in a Major U.S. City</b> Kazi, F., Suleh, A., Guo, J., Siddiqui, A., Basher, A., Bradbury J.	50	<b>Predicting Childhood Blood Lead Levels in St. Joseph County and Elkhart County, Indiana</b> Williams, A., Sisk, M., Beidinger-Burnett, H., Ghiaseddin, R., Tighe, M.
37	<b>Assessment of dialysis staff knowledge and access to kidney transplantation</b> Kelty, C., Buford, J., Di, M., Drewry, K., Patzer, R.	51	<b>Health Insurance Types Contribute to Acidosis Risks: A Report from All of Us Cohort</b> Gatz, A., Xiong, C., Gebregziabher, N., Li, X., Eadon, M., Su, J.
38	<b>Racial and Socioeconomic Disparities in the Treatment of Unruptured Intracranial Aneurysms: A County Hospital Experience</b> Smith, T., Useche, N., Wormmeester, K., Martinez, M., Tejada, J.G.	52	<b>Implementation of the HANDS in Autism® coordinated care continuum: Changes in self-reported caregiver stress and patient behavioral intensity secondary to implementation of the HANDS in Autism® Model across home and school settings following acute inpatient hospitalization</b> Deodhar, A., Neal, T., Darsanapu, A., Swiezy, N.
39	<b>Breast Cancer Disparities Among Women in Underserved Communities in Northwest Indiana</b> Altarshan, B., Patel, P., Han, A.	53	<b>Group Prenatal Care Models, Experiences, and Outcomes: An Integrative Review</b> LaTurner, M., Muvuka B.
40	<b>Latinas' Perspectives on Donating Healthy Breast Tissue: Implications for Recruitment Methods and Messaging</b> Ridley-Merriweather, K.E., Vogel, K.	54	<b>Stroke Care in Patients with Limited English Proficiency</b> Jones, A., Peña, S.
41	<b>Examining Recollections of Black women with Breast Cancer who Participated in Clinical Trials: A Grounded Practical Theory Study of Patient-Provider Communication</b> Ridley-Merriweather, K.E., Okoruwa, O.P., Vogel, K., Stornio, A.M.	55	<b>The Association of Residential Migration and Retention in HIV Care</b> Yiannoutsos, C.T., Nelson, T.L., Gharbi, S., Andres, U.M., Wiehe S.E.
42	<b>Indiana Contraceptive Use Metrics through PATH4YOU Program: Initial Review</b> Ruggles, M., Wendholt, K., Bernard, C.	56	<b>"Enhancing Functional Communication and Social Engagement for Students with Autism: Distal Impacts of the HANDS in Autism® Model in Collaborative Community Classroom Sites."</b> Thumu, M., Neal, T., Deodhar, A., Pittala, V., Swiezy, N.
43	<b>Interaction Between Race, Cardiology Care, And the Receipt of Guideline-Directed Medical Therapy in Peripartum Cardiomyopathy</b> Bolakale-Rufai, I.K., Knapp, S.M., Johnson, A., Brewer, L., Mohammed, S., Addison, D., Mazimba, S., Tucker-Edmonds, B., Breathett, K.	57	<b>Enhancing evidence-based practices in Educational Settings serving students with autism spectrum disorder: A collaborative study of the HANDS in Autism® Model in community classroom settings</b> Pittala, V., Neal, T., Deodhar, A., Thumu, M., Swiezy, N.
44	<b>Risk of Atherosclerotic Disease and Prevalence of Associated Co-Morbid Conditions in an Indianapolis Student-Run Free Clinic's Patient Population</b> Padgett, L., Patel, R., Slaughter, M., Asthana, M., Malik, N., Guo, J., Kabangu, M., Devanathan, N., Sevilla, J.	58	<b>Association of Quality of Life and Social Determinants of Health in Children with Brain and Spinal Cord Tumors</b> Knight, K.M., Coven, S.L., Balsara, K.E.
45	<b>Impact of race-free estimated Glomerular Filtration Rate on racial disparity in timely kidney care</b> Gunderman, D.J., Fricker, G.E., Kondury, K., Moe, S.M., Al-Makki, A.	59	<b>Underrepresentation in Cardiovascular Disease Clinical Trials</b> Khan, U., Raman, S.

# Our Partners

***This symposium is presented by HEAL-R in collaboration with our partnering organizations, including:***



Indiana University Health



**Irsay Institute**

INDIANA UNIVERSITY



**INDIANA UNIVERSITY**  
SCHOOL OF MEDICINE



National Institute  
on Minority Health  
and Health Disparitie

*Funding for this conference was made possible by 1R13MD018938-01 from the National Institute on Minority Health and Health Disparities. The views expressed in written conference materials or publications and by speakers and moderators do not necessarily reflect the official policies of the Department of Health and Human Services; nor does mention by trade names, commercial practices, or organizations imply endorsement by the U.S. Government.*



Indiana University Health

## OFFICE OF HEALTH EQUITY RESEARCH & ENGAGEMENT (HERE)

### WHO WE ARE

HERE was established in 2021 to examine internal operations and clinical care through the lens of diverse patients and communities.

### OUR FOCUS



Access



Experience



Outcomes

**Learn more at  
[iuhealth.org](http://iuhealth.org)**